

GENERAL PURPOSE CAMERA HOUSINGS, BRACKETS

WBJA WALL MOUNT BRACKET

Made of aluminium
Fully adjustable swivel head
Load rating: 25kg (55lb)
Length: 285mm (11in)



WBJA

WBMA WALL MOUNT BRACKET

Made of aluminium
Fully adjustable swivel head
Load rating: 25kg (55lb)
Length: 204mm (8in)



WBMA

WBOVA2 WALL MOUNT BRACKET

Made of aluminium
Fully adjustable swivel head
Internal cable management
Load rating: 25kg (55lb)
Length: 204mm (8in)
The sealing rings OWBIP2 or OWBIP3 ensure an IP66 protection to the housing
Unit weight: 0.6kg (1.3lb)



WBOVA2

WBOV3A2 WALL BRACKET WITH SUPPORT PLATE AND WEATHERPROOF JUNCTION BOX

Made of aluminium
Internal cable management directly to the box
Load rating: 25kg (55lb)
Length: 204mm (8in)
The sealing rings OWBIP2 or OWBIP3 ensure an IP66 protection to the housing



WBOV3A2

WBLA WALL BRACKET FOR HGV

Solid, anticorrosive aluminium construction
Load rating: 70kg (154lb)
Length: 457.5mm (18,7in)



WBLA

WCM3A CEILING MOUNT

Made of aluminium
Fully adjustable swivel head
Load rating: 15kg (33.5lb)
Length: 300mm (11.8in)



WCM3A

WCM4A2 CEILING MOUNT

Made of aluminium tube
Internal cable management
Load rating: 15kg (33.5lb)
Length: 412mm (16.2in)



WCM4A2

WCM5A CEILING MOUNT

Made of aluminium

Load rating: 15kg (33.5lb)

Length: 412mm (16.2in)

500mm (19in) linear extension available with WCPMPA

Unit weight: 1.4kg (3lb)



WCM5A

WCPMPA LINEAR EXTENSION FOR WCM4A2 AND WCM5A

It allows a 500mm (19in) extension

WFWCA PARAPET BRACKET

Made of aluminium

Fully adjustable swivel head

Load rating: 15kg (33.5lb)

Length: 185mm (7.3in)



WCPMPA

DBHWGC POLE MOUNT ADAPTOR

Made of steel

For pole diameters: 210÷225mm (8.3÷8.6in)

To be combined with the reinforcing support plate WCPA

Load rating: 25kg (55lb) (static load)



WFWCA

WCWA CORNER MOUNT ADAPTOR

Made of steel

Load rating: 30kg (66lb)

WSFPA POLE MOUNT ADAPTOR

Made of aluminium

Load rating: 30kg (66lb)

For pole diameters: 65÷110mm (2.6÷4.3in)



DBHWGC

WCPA REINFORCING SUPPORT PLATE FOR POOR CONSISTENCY WALLS

Made of aluminium

Available with a supporting box with internal cable channel

Load rating: 50kg (110lb)



WCWA



WSFPA



WCPA

TECHNICAL DATA

WBJA WALL MOUNT BRACKET

Made of aluminium

Fully adjustable swivel head

Load rating: 25kg (55lb)

Length: 285mm (11in)

Unit weight: 0.6kg (1.3lb)

PART NUMBER

WBJA Wall mount bracket

PACKAGE

Model Number	Weight	Dimensions (WxHxL)	Master carton
WBJA	0.7kg (1,5lb)	7.5x12x31cm (3x5x12in)	20

WBMA WALL MOUNT BRACKET

Made of aluminium

Fully adjustable swivel head

Load rating: 25kg (55lb)

Length: 204mm (8in)

Unit weight: 0.5kg (1.1lb)

PART NUMBER

WBMA Wall bracket with ball joint

PACKAGE

Model Number	Weight	Dimensions (WxHxL)	Master carton
WBMA	0.6kg (1.3lb)	7.5x12x23cm (3x4.7x9in)	25

WBOVA2 WALL MOUNT BRACKET

Made of aluminium

Fully adjustable swivel head

Internal cable management

Load rating: 25kg (55lb)

Length: 204mm (8in)

The sealing rings OWBIP2 or OWBIP3 ensure an IP66 protection to the housing

Unit weight: 0.6kg (1.3lb)

PART NUMBER

WBOVA2 Wall bracket with internal cable channel

PACKAGE

Model Number	Weight	Dimensions (WxHxL)	Master carton
WBOVA2	0.7kg (1,5lb)	8.5x13x22cm (3.3x5x9in)	25

WBOV3A2 WALL BRACKET WITH SUPPORT PLATE AND WEATHERPROOF JUNCTION BOX

Made of aluminium

Internal cable management directly to the box

Load rating: 25kg (55lb)

Length: 204mm (8in)

The sealing rings OWBIP2 or OWBIP3 ensure an IP66 protection to the housing

Unit weight: 2.4kg (5.3lb)

PART NUMBER

WBOV3A2 Wall bracket with internal cable channel, counterplate and support box, not compatible with OHEBVF1, OHEBVF2 and OHEBVF3

PACKAGE

Model Number	Weight	Dimensions (WxHxL)	Master carton
WBOV3A2	2.5kg (5.5lb)	11x19x53cm (4.3x7.5x21in)	-

WBLA WALL BRACKET FOR HGV

Solid, anticorrosion aluminium construction

Load rating: 70kg (154lb)

Length: 457.5mm (18,7in)

Unit weight: 6.6kg (14.5lb)

PART NUMBER

WBLA Bracket and ball joint in solid anticorrosion aluminium construction, RAL9002

PACKAGE

Model Number	Weight	Dimensions (WxHxL)	Master carton
WBLA	7kg (15.4lb)	27x18x49cm (10.5x7x19in)	-

WCM3A CEILING MOUNT

Made of aluminium

Fully adjustable swivel head

Load rating: 15kg (33.5lb)

Length: 300mm (11.8in)

Unit weight: 1.8kg (4lb)

PART NUMBER

WCM3A Ceiling bracket with ball joint

PACKAGE

Model Number	Weight	Dimensions (WxHxL)	Master carton
WCM3A	2.1kg (4.6lb)	13x32.5x27cm (5x13x11in)	12

WCM4A2 CEILING MOUNT

Made of aluminium

Internal cable management

Load rating: 15kg (33.5lb)

Length: 412mm (16.2in)

500mm (19in) linear extension available with WCM4A

Unit weight: 1.3kg (2.8lb)

PART NUMBER

WCM4A2 Ceiling bracket with internal cable channel

PACKAGE

Model Number	Weight	Dimensions (WxHxL)	Master carton
WCM4A2	1.7kg (3.7lb)	10.5x37x37cm (4x14x14in)	6

WCM5A CEILING MOUNT

Made of aluminium

Load rating: 15kg (33.5lb)

Length: 412mm (16.2in)

500mm (19in) linear extension available with WCPA

Unit weight: 1.4kg (3lb)

PART NUMBER

WCM5A Ceiling bracket with ball joint

PACKAGE

Model Number	Weight	Dimensions (WxHxL)	Master carton
WCM5A	1.7kg (3.7lb)	10.5x37x37cm (4x14x14in)	6

WCPA LINEAR EXTENSION FOR WCM4A2 AND WCM5A

It allows a 500mm (19in) extension

Unit weight: 0.5kg (1.1lb)

PART NUMBER

WCPA Linear extension for WCM4A2 and WCM5A

PACKAGE

Model Number	Weight	Dimensions (WxHxL)	Master carton
WCPA	0.6kg (1.3lb)	6x6x58.5cm (2x2x23in)	-

WFWCA PARAPET BRACKET

Made of aluminium

Fully adjustable swivel head

Load rating: 15kg (33.5lb)

Length: 185mm (7.3in)

Available extension through WFWBTA

Unit weight: 0.5kg (1.1lb)

PART NUMBER

WFWCA Column bracket with joint

PACKAGE

Model Number	Weight	Dimensions (WxHxL)	Master carton
WFWCA	1kg (2.2lb)	14.5x15x27cm (6x6x11in)	15

DBHWGC POLE MOUNT ADAPTOR

Made of steel

For pole diameters: 210÷225mm (8.3÷8.6in)

Load rating: 25kg (55lb) (static load)

To be combined with the reinforcing support plate WCPA

Unit weight: 1.2kg (2.6lb)

PART NUMBER

DBHWGC Pole adapter Ø 210mm, max 225mm (8.2in, max 8.9in)

PACKAGE

Model Number	Weight	Dimensions (WxHxL)	Master carton
DBHWGC	1.5kg (3.3lb)	24x15x22cm (9x6x9in)	10

WCWA CORNER MOUNT ADAPTOR

Made of steel

Load rating: 30kg (66lb)

PART NUMBER

WCWA Corner mount adaptor

PACKAGE

Model Number	Weight	Dimensions (WxHxL)	Master carton
WCWA	1.1kg (2.2lb)	14.5x15x27cm (6x6x11in)	15

WSFPA POLE MOUNT ADAPTOR

Made of aluminium

Allows the internal cable management

Load rating: 30kg (66lb)

For pole diameters: 65÷110mm (2.6÷4.3in)

Unit weight: 0.9kg (2lb)

PART NUMBER

WSFPA Pole mount adaptor

PACKAGE

Model Number	Weight	Dimensions (WxHxL)	Master carton
WSFPA	1kg (2.2lb)	10x16x23cm (4x6x9in)	15

WCPA REINFORCING SUPPORT PLATE FOR POOR CONSISTENCY WALLS

Made of aluminium

Available with a supporting box with internal cable channel (WBOV3A2)

Load rating: 50kg (110lb)

Unit weight: 0.6kg (1.3lb)

PART NUMBER

WCPA Reinforcing support plate for poor consistency walls

PACKAGE

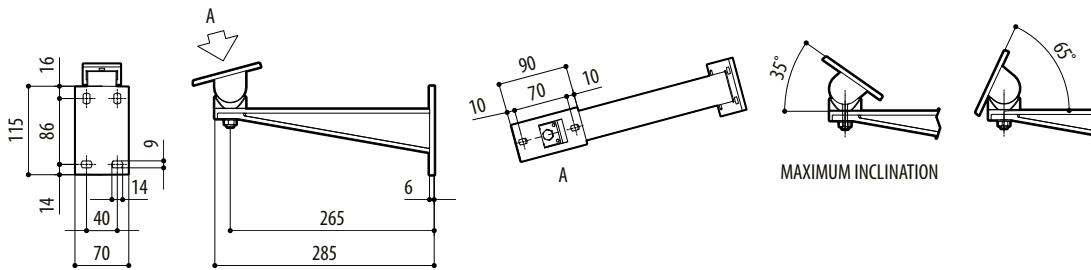
Model Number	Weight	Dimensions (WxHxL)	Master carton
WCPA	0.7kg (1,5lb)	10x16x23cm (4x6x9in)	30

GENERAL PURPOSE CAMERA HOUSINGS, COMPATIBILITY HOUSINGS/BRACKETS

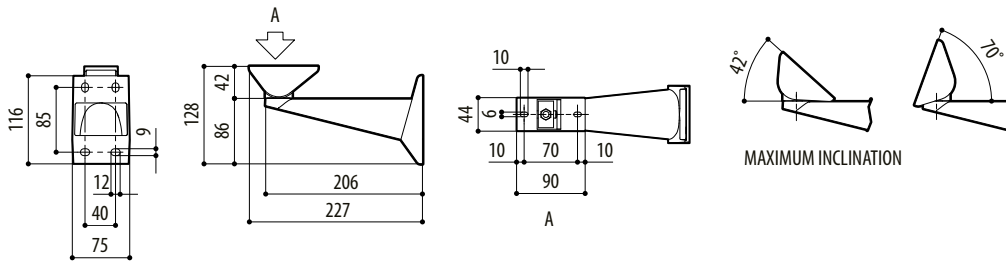
Bracket	Wall					Ceiling			Column	Pole mount adaptor		Corner adaptor	Support plate adaptor
	WBLA	WBJA	WBMA	WBOVA2	WBOV3A2	WCM3A	WCM4A2	WCM5A	FWFCA	DBHWGC	WSFPA	WCWA	WCPA
HOV	-	✓	-	✓	✓	✓	✓	✓	✓	✓	✓	✓	✓
HOV Hi-PoE IPM	-	✓	-	✓	✓	✓	✓	✓	✓	✓	✓	✓	✓
HTV	-	✓	-	✓	✓	✓	✓	✓	✓	✓	✓	✓	✓
PUNTO	-	✓	-	✓	✓	✓	✓	✓	✓	✓	✓	✓	✓
PUNTO Hi-PoE	-	✓	-	✓	✓	✓	✓	✓	✓	✓	✓	✓	✓
VERSO COMPACT	-	✓	✓	✓	✓	✓	✓	✓	✓	✓	✓	✓	✓
VERSO	-	✓	-	✓	✓	✓	✓	✓	✓	✓	✓	✓	✓
VERSO Hi-PoE IPM	-	✓	-	✓	✓	✓	✓	✓	✓	✓	✓	✓	✓
VERSO POLAR	-	✓	-	✓	✓	✓	✓	✓	✓	✓	✓	✓	✓
HEG	-	✓	-	-	-	-	-	✓	✓	✓	✓	✓	✓
HTG	-	✓	-	-	-	-	-	✓	✓	✓	✓	✓	✓
HEK	-	-	✓	✓	✓	✓	✓	✓	✓	✓	✓	✓	✓
HEB	-	✓	✓	✓	✓	✓	✓	✓	✓	✓	✓	✓	✓
HGV	✓	-	-	-	-	-	-	-	-	-	-	-	-

TECHNICAL DRAWINGS

The dimensions of the drawings are in millimetres.

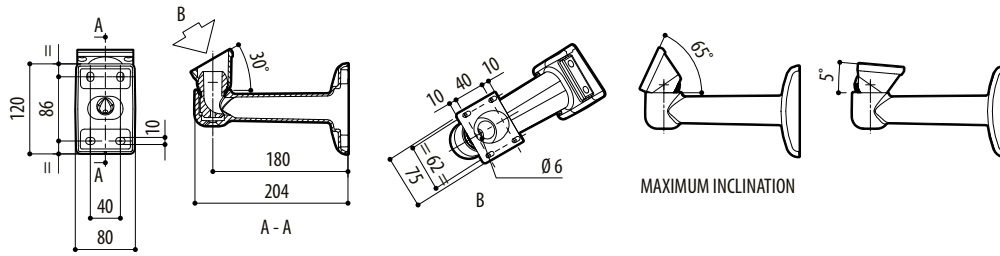


WBJA

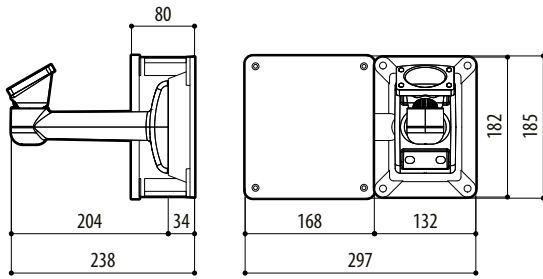


WBMA

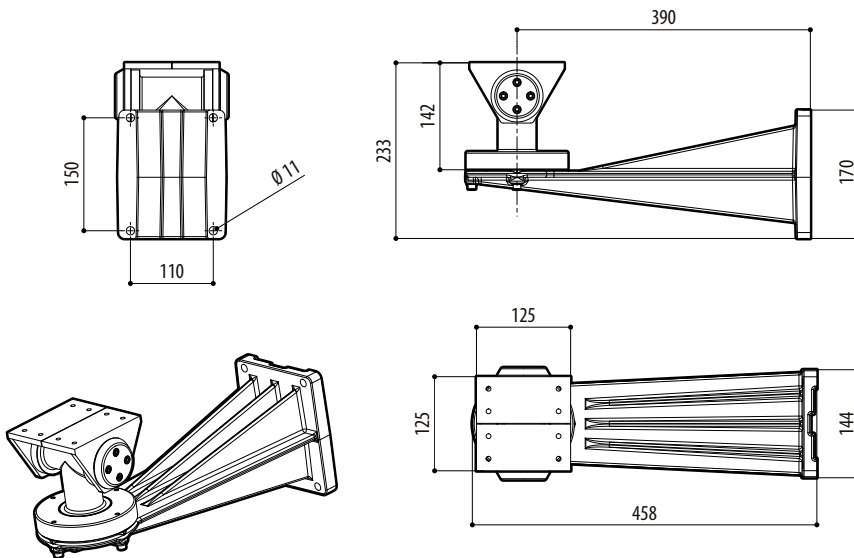




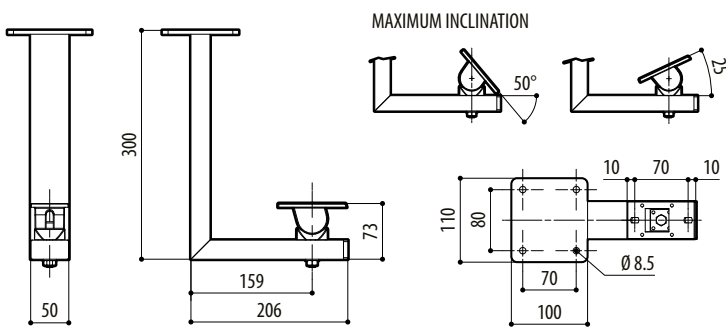
WBOVA2



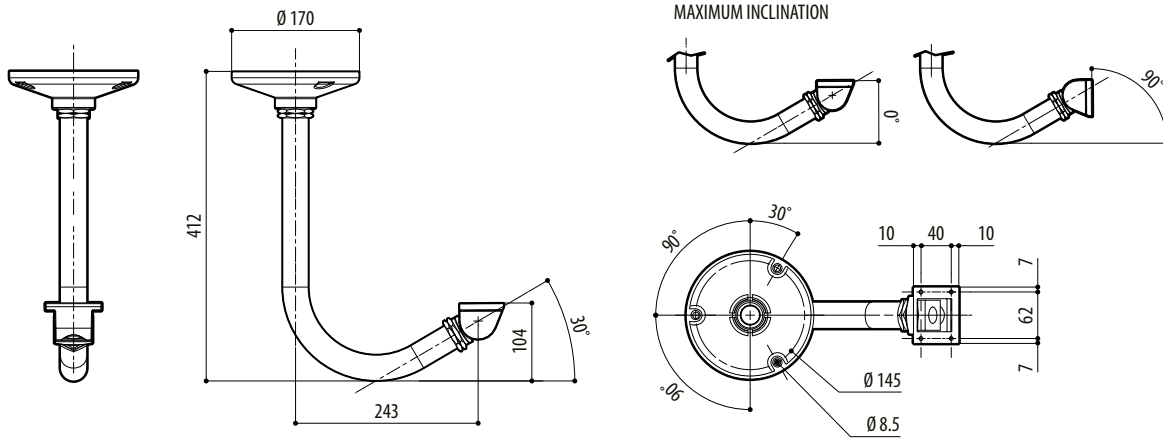
WBOV3A2



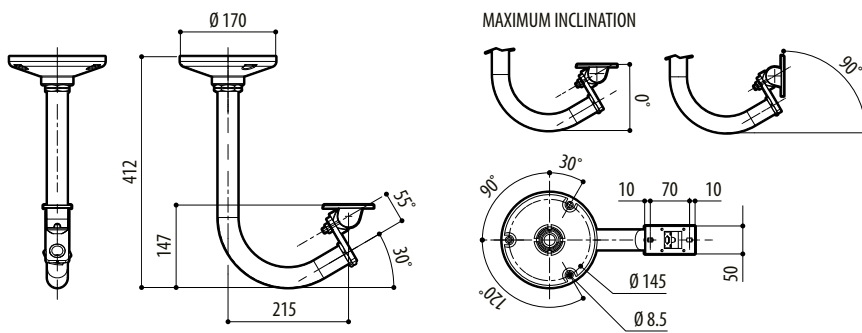
WBLA



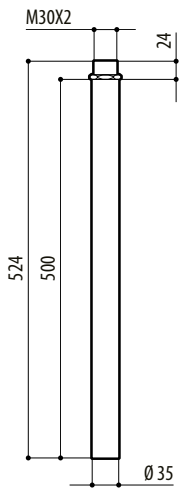
WCM3A



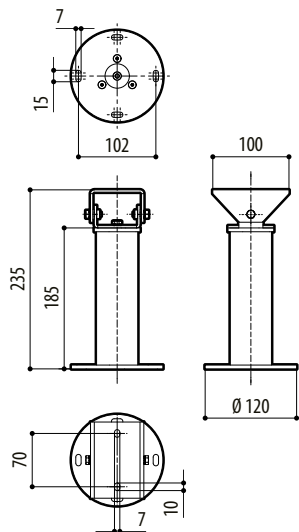
WCM4A2



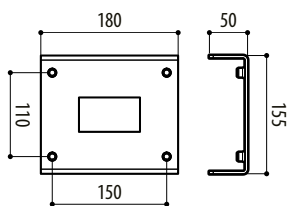
WCM5A



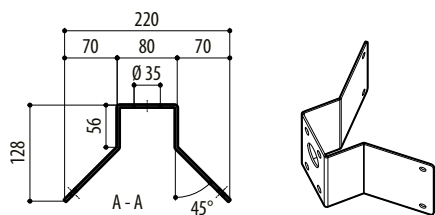
WCPA



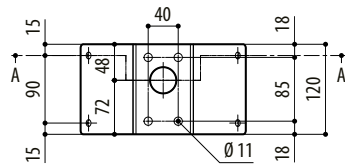
WFCA

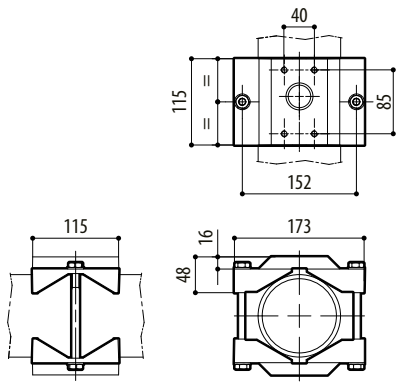


DBHWGC

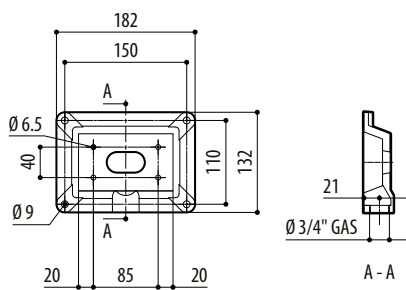


WCWA





WSFPA



WCPA