

IP touchscreen 10.1" Keypad All-In-One - Android™-based



KS12100045.301 - conexa - white
KS12100045.302 - conexa - black

why conexa?

- because of its slim design and 10.1" HD screen, the keypad can be easily wall-mounted, compatible with standard European recessed boxes. The magnetic mounting system on the back of the keypad facilitates flush wall installation, allowing quick mounting in both vertical (portrait) and horizontal (landscape) orientation.
- because it communicates with the lares 4.0 control panel via wired LAN or, alternatively, via Wi-Fi, providing greater connection flexibility and adapting to different installation needs;
- because thanks to the Android™ 14 operating system and the pre-installed Play Store, it allows the installation of 3rd party apps functional to Security; this feature makes it ideal for centralizing the management of Android-compatible devices already present in the residence, such as video intercoms, cameras, air conditioning systems, etc.

HOW TO ORDER

- KS12100045.301 - conexa - white color
- KS12100045.302 - conexa - black color

INCLUDED PARTS

- 1 conexa keypad with integrated magnetic mount
- 1 metal fixing bracket with included screws
- 4 leveling discs for wall irregularities
- 1 Installation Quick Guide
- 1 User Quick Guide

DATASHEET

The **conexa** keypad, through the dedicated proprietary **App conexa**, combines advanced technology with ease of use, offering direct and immediate access to all the functions provided by the lares 4.0 control panel.

The **conexa** keypad combines a modern and compact design with advanced performance, making it the ideal solution for both residential and professional applications; it communicates with the lares 4.0 IoT platform through the local network, using a wired LAN connection via the Ethernet interface (with a network switch), or alternatively via Wi-Fi through a wireless router.

With its slim design and a 10.1" HD screen, it perfectly integrates into any environment thanks to flush wall mounting (DIN 503 box or 60 mm round box), in both vertical (portrait) and horizontal (landscape) orientation.

The magnetic back of the keypad allows quick installation on standard European flush-mounting boxes.

The keypad can be powered via PoE (48V) or through a power supply (12–16V) or USB Type-C cable.

Keypad enrollment in the control panel is fast and requires no router configuration; it can also be supervised by the control panel like a standard BUS keypad.

Thanks to the Android™ operating system and the pre-installed Google Play Store, it is also possible to install third-party apps, turning **conexa** into a real multifunction terminal. This allows the user to control any device present in the home – based on the Android operating system – such as video intercoms, cameras, air conditioning systems, and other smart devices, thus becoming a true control center.



IP touchscreen 10.1" Keypad

All-In-One - Android™-based

Technical characteristics

• Capacitive touch screen	10.1"
• Display	HD 1280 x 800
• CPU	MT8768 4 x Arm Cortex-A53, 2.0 GHz +4 x Arm Cortex-A53, 1.5 GHz
• Android™SO	14
• Google Mobile Services	Certified
• RAM	4 Gb
• ROM	64 Gb
• Wi-Fi	Wi-Fi: 802.11 ac/a/b/g/n 2.4GHz/5G
• Display orientation	Supports both horizontal (landscape) and vertical (portrait) mounting; the user interface automatically adapts.
• Power	- Connector RJ45 PoE 48 V - 53 V or Connector RJ12 12 V - 16 V or - USB Type C
• Current consumption	800 mA max @ 14 V (max 12 W)
• Loudspeaker	dual speakers
• Microphone	Yes
• Wall mounting	The metal bracket features holes for installation on a DIN 503 box or on a 60 mm round box; it is adaptable to both landscape and portrait orientation. The magnetic back of the keypad facilitates a perfectly flush wall mounting.
• Protection	IP 30
• Operating temperature	-10°C / +55° C
• Color	white, black
• Dimensions (W x H x D)	243 x 152 x 34 mm (thickness after installation: 10 mm)
• Weight	548 g

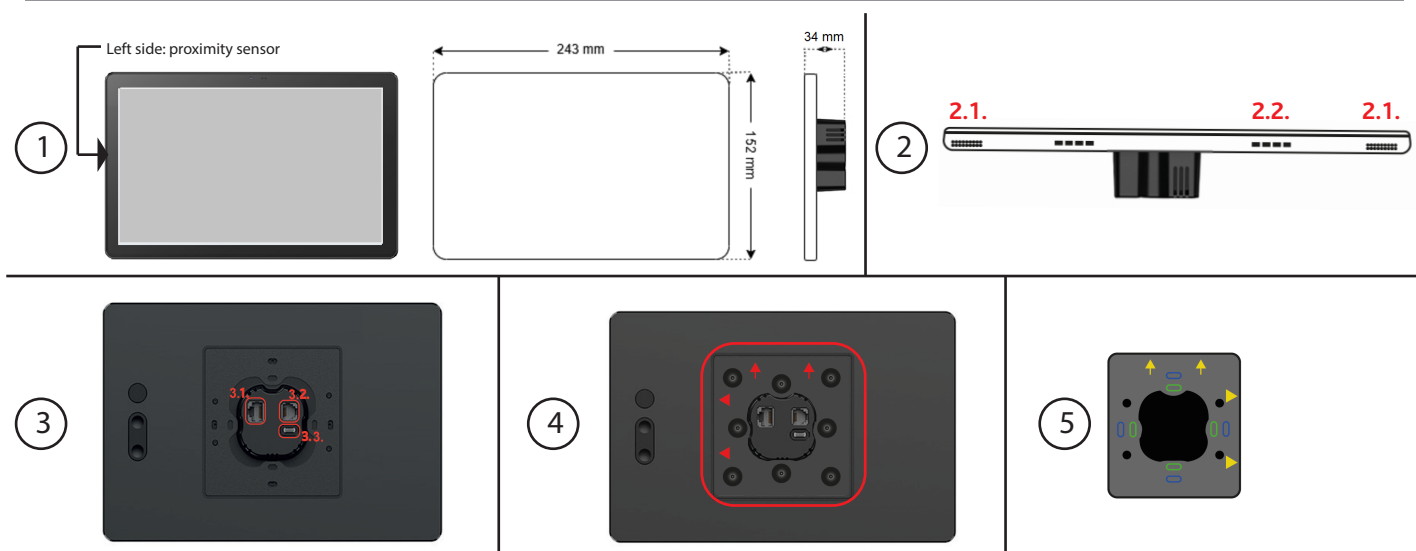
Functions

Main functions:

- arming or disarming the system either totally or by partitions;
- monitoring the status of all installed devices and receive notifications of alarm, tamper, fault, power supply issues, etc.;
- manage security and home automation devices (include/exclude, activate/deactivate) in real time or by scheduling automated processes with the time scheduler;
- manage temperature values detected by the sensors installed in the system, used for chronothermostat control (programming, activation, deactivation), etc.;
- recording all operations/events in the control panel;
- secure update management: new firmware versions are notified on the Home page;
- installation and customization of third-party applications from the Google Play Store for device management;
- the keypad can be installed in landscape or portrait orientation; the App interface automatically adjusts to ensure optimal user experience.

IP touchscreen 10.1" Keypad
All-In-One - Android™-based

Physical description



Legend

1	Dimensions (W x H x D)	243 x 152 x 34 mm (thickness after installation: 10 mm)
2	Bottom view:	2.1. Speakers (n.2) - 2.2. Microphone
3	Rear view - Connectors:	3.1. PoE Ethernet interface. 3.2. RJ12 interface. 3.3. USB Type-C interface.
4	Rear view - Magnetic mount:	The magnetic back of the keypad facilitates mounting on the metal bracket; The arrows on the back of the keypad indicate the correct orientation for installation in portrait (vertical) or landscape (horizontal) mode.
5	Metal mounting bracket:	Wall-mount bracket with arrows showing the correct vertical or horizontal installation on standard European flush boxes.

Quantity data

lares 4.0 models	wls 96	16	40	40 wls	140 wls	644 wls
Maximum number of IP user interfaces	1	2	4	4	8	14

Technical specification, appearance, functional and other product characteristics may change without notice.

COMPLIANCE
• Europe - CE, RoHS



Ksenia Security SpA
Strada Provinciale Valtresino,49
63065 Ripatransone, AP, Italy
tel. +39 0735 751646 / fax +39 0735 652281

General information / info@kseniasecurity.com
Sales / sales@kseniasecurity.com
Technical support / helpdesk@kseniasecurity.com
www.kseniasecurity.com

Rev. 02 - 11/2025